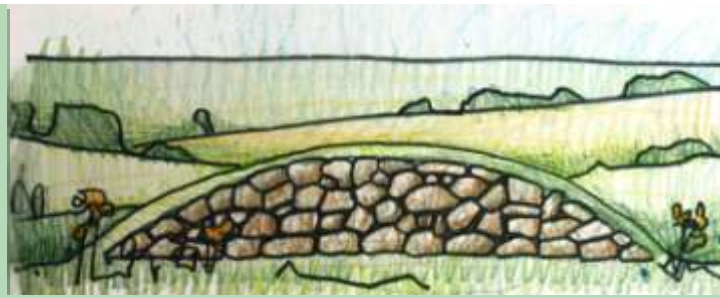


ANIMATE EVENTS FOR THE DIARY...

Saturday 9 October - Drop-in workshop for *The Big Draw*
Historic Dockyards, Chatham www.thedockyard.co.uk

Saturday 11 & Sunday 12 December *The Strood Safari*
In and around Strood, Medway

Image: (To right) Illustrations for 'Strood Safari' by Rob Turner



IN THIS ISSUE

A vision for Strood
Animate gets animated
Word Orchestras
On Board *NEW feature*
Emily Tull runs into interview

ISSUE 4: WINTER 2010

animate
arts company ltd

NEWSLETTER

Before you start reading the more in-depth news in this edition, the news in brief is that we are seriously studio hunting - full steam ahead now and with the support of our recently extended board (check out the feature about our board further on!). I sense that a new address is imminent!

I'm also delighted to welcome a new member to the office team - Hannah Riches, who will be on our intern programme from October 2010-2011, supporting all the school projects that we do over the next academic year. Offering professional development opportunities

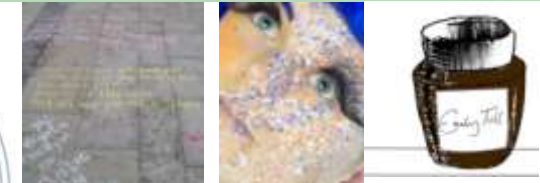
has been a theme of this quarter, when eight animate artists took part in some fantastic special needs training, funded and provided by ECM Workbank. Inspired by the potential of bringing creativity to young people with autism and other special needs, animate is sure to be putting some of their training to good use!

Anyway hope that you enjoy reading about the projects that we have been involved in this summer and the work that is going on behind the scenes...happy reading.

Jo Dyer
Artistic Director

The workforce

This summer, we appointed four new board directors with outstanding skills and expertise. Each offering to support *animate's* work and development, by sharing their wealth of experience. We are delighted to welcome Cassandra Fry, Posie Bogan, Miriam Demirates and Tina Carter to form an even more formidable work force behind the scenes!



PROUDLY PRESENTING THE MAGICAL MISS L.TOES

A delightful Christmas project for little ones

Animate is delighted to announce a new winter service available to schools, designed to support children in the art of writing a perfect Christmas wish-list letter.

Over recent years the demands on the pre-Christmas 'Dear Santa' Postal Service have dramatically increased, and we are expecting 2010 to be the busiest year yet. Miss L.Toes is a Senior Member of the North Pole Christmas Council and it is her role to visit schools all across the world offering children letter-writing support through class workshops and 1-2-1 consultations. She provides guidance to each young writer ensuring that their letter is perfectly formatted and written for the elves to read.

The service also includes use of the

latest Turbo Boost Series 2000 PostBox, which has an approximate delivery time of IMMEDIATELY and guarantees direct delivery to the North Pole Christmas Council sorting office.

A visit by Miss L. Toes is a real *character* who promises to add some winter magic to this special time of year. If you would like to take advantage of this opportunity or receive a free quote for your school, please contact the *animate* on hannah@animatecommunityarts.com who are proudly acting as agents for Miss L.Toes.

Animate Arts Company

A: Green Gecko Studios, Westgate Hall, Westgate Hall Road, Canterbury, CT1 2BT

T: 01227 780081 **E:** email@animatecommunityarts.com **W:** www.animatecommunityarts.com

SCHOOLS and YOUTH

by LOUISE HAMMOND

ANIMATE GETS ANIMATED

Animate returned to Gatland House Education Unit this July to run a brand new, animation workshop with some of their pupils. Previously in a series of workshops at the school, artists and pupils have explored music through the different art forms, including textiles (they created a fabulous hanging inspired by music) and a sculpture workshop, where pupil created copper wind chimes to make natural soundscapes. The third of the music inspired trilogy moved into animated music videos! Tim Leek one of *Animate's* professional photographers and animator Hannah Miller ran two half day workshops in the school developing ideas and shooting the stop-frame animations with the pupils. The final montage of music videos that were created have been given to each of the pupils. If you would like to explore our music inspired workshops, whether textiles, sculpture or animation, please contact *animate* on 01227 780081.

THE WORD ORCHESTRAS

Animate has been involved in the StArt! programme partnering primary schools with the Gulbenkian Theatre to promote teachers and pupils engaging with their local cultural venues. F the second year in this three year-long programme was truly delightful. As well as the schools receiving free tickets to see theatre shows at the Gulbenkian, pupils from Diocesan Payne & Smith Primary and Wincheap Primary in Canterbury had the opportunity to take part in workshops and work with Justin Coe, a live literature performer to create their own show-stopping poetry performances. Younger pupils Key stage one pupils worked with Jo Dyer to design and build a stage set for the Gulbenkian stage, which provided a striking backdrop to Justin and the school's performances of 'The Word Orchestras' to a live audience!

Next year the schools will continue this amazing work and aim to create a full stage production, which cannot be possible without the fabulous support and funding from the Prince of Wales' Foundation for Children and the Arts.

Kent Youth Theatre Festival 2010

In July, *Animate* were invited to work on this year's youth festival with nineteen youth theatre groups involved, from in and around Kent. Artists worked with young people to create different installations around the venue as a backdrop to their final performance.

The entire weekend festival was inspired by the forthcoming Olympics Games 2012, particularly the five represented Olympic rings and continents of the world. The installations included a corridor of giant forna and flora from Africa, a garden of totem poles in South America, a peaceful place full of prayer flags for Asia, the encircling Celtic knots of Europe and a floorscape of aboriginal art in Oceania.

It was a great weekend with the highlight of meeting and working with the fabulously creative and hard-working Woo who became an honorary animate-or and a great support throughout the whole weekend. Thank you!



Image: Kent Youth Festival 2010, Tribal gathering
Photo by Stephen Berkerley White

Blingin' Jewellery

Teaming up with Swale Borough Council's sports and play team, artist Linnie provided fun, creative workshops for young people in their summer holidays. Over three days, travelling around the Swale district, Linnie ran jewellery workshops for boys and girls! Participants made their own creations from funky hair clips to brilliant bangles, by weaving and plaiting fimo and modeling clay, which they took home with them. One chap on the workshop said, "This is great - it's the only day I haven't been bored!" Lots of fun was had by all, and in true *animate* style even the 'grown-ups' had a go!



Images: Pupils creating stage scenery at school by Jo Dyer

ON BOARD is our new article finding out more about our many fabulous board members, who give their time, expertise and support to Animate to grow and enable projects to happen in the community. So for the first of many, it feels natural to firstly introduce our brilliant chairman Art Hewitt who has played a key part in the organisation's development in recent years.

Behind the scenes I currently chair the meetings, mentor finances and accounting, and championing Animate at every opportunity!

Other hats Over the last three decades I have had lots of hats including being an artist, practitioner, manager and occasional performer! Currently though I'm General Manager at the extraordinary Theatre Royal Margate. I'm also celebrating my 20th wedding anniversary this year with Hilary and our children Alice (20), Harry (18) and Samuel (16)!

Animate is... Hundreds of hand-made oyster grotters lighting up Reeves Beach in Whitstable as part of the July Oyster Festival - all created by local people with the support of Animate artists.

Right here, right now At animate we are consolidating the position Animate has forged for itself as a quality provider of creative projects in the South East.

Direction of animate I think the direction of animate will include more staff to support the organisation's running, and the development of an arts and well-being programme as a key strand to its work.

COMMUNITY

The Art of Giving Flowers

As part of People United's GIANT PICNIC on Sunday 29th August, *Animate* ran a fabulous flower making workshop. Artists invited picnic-ers to make something beautiful that lasts forever come rain or shine. The flowers, which were made from bright coloured foam, wire and a flourish of creativity, looked fantastic. The Art of Giving Flowers workshop encouraged participants to give their flower to a special someone to support the kindness ethos driven by People United's current project 'We All Do Good Things' in Herne Bay. Thankfully the weather was kind to us, and managed to hold off until the picnic had finished, so no soggy sandwiches in sight!



Images: Valley of Vision designs, Native flowers by Rob Turner

VALLEY OF VISIONS and THE STROOD SAFARI

Animate are delighted to be delivering an amazing creative project for the *Engaging Landscapes* programme, led by Valley of Visions in Medway.

Local communities in Strood are creating a brand new community trail around their town, and *Animate* artist Rob Turner will be working with youth groups and schools to create a series of mosaic artworks which will be sited along the trail. When the trail officially opens in December, performers from *animate* will take the local community of the 'Strood Safari', spotting the new artworks, discovering the heritage and engaging with green spaces along the way.

The Strood Safari has been commissioned by Valley of Visions, a three year Heritage Lottery Fund project investing in the landscape and countryside of the Medway Gap, whilst providing new opportunities to engage the local community to conserve, enhance and celebrate the natural beauty and heritage of the area. To find out more visit www.valleyofvisions.org.uk



Image: Art meets Maggie's giant, (tired) seagull after a parade

ANIMATE ARTIST: EMILY TULL

This issue, we meet Emily Tull who is one of Animate's visual artists, supporting projects from street parades to exhibitions to school workshops.

We know that you turn your hand to many forms of artwork but what type of artist do you regard yourself as?

Definitely visual. I don't really like to pigeon hole myself to one particular art form, over the years I have experimented (and still do) with different techniques to find the ultimate way to express myself.

Ok so it's not about the medium, is it about the subject? What is your inspiration?

Yes, I find faces fascinating, they're constantly changing and can be changed through make-up. But more than this my fascination is with the colouration and fragility of skin and within my portraits I strive to bring these issues across. My concern is more with the flesh than the actual likeness. Inspiration comes from many sources including Cindy Sherman, Ancient Tomb painting, Spike Milligan, Tim Burton, Religious painting, Francis Bacon and Chuck Close.

I also dabble with face painting which is an outlet for humor using faces. My paintings/photography has been quite dark in the past. This came by accident, just spending a day practicing techniques and being incredibly bored of the standard face painting designs. I wanted designs that caused more interaction, so ended up videoing myself doing impressions with various creatures, these have evolved and I have quite a following on you tube!! From humble fishy to Jimi Hendrix – who'd have thought!

With such a wide range of artworks, where can we see your work? Anywhere in Kent?

I have recently exhibited my work in Ramsgate (and also have a painting on the Great Wall of Ramsgate at the moment!), but I also have a few pieces which can be seen at Castle Arts in Canterbury. I've posted a lot of my filmed face painting impressions online for others to enjoy too, and my community art work with animate can be found on their website!

What kind of work have you done with animate?

It started when I shadowed for animate on Herne Bay Festival parade and I have done lots of different things since then. Recently (and probably my favourite to date!) I facilitated a 1980's make-up workshop at a secondary school in Thanet. It was lovely to do a project using face-painting techniques I normally use in my artwork, giving the group different ideas – the transformations were great!

And apart from all this creative work you do, I hear you are a marathon runner? Is this true?

My one ambition in life since I was very little was to run the London Marathon – I remember being very jealous of my junior school teacher running it in 1989! Eventually I got my chance last year – an amazing experience, extremely emotional and I highly recommend anyone considering it to do it. I have now done the Silverstone half marathon, Edinburgh Marathon and last month I did the Great North Run. Now looking for a new challenge, training for such events are extremely draining mentally, physically and socially!



EMILY: FIVE LONG DISTANCE RUNNING TOP-TIPS

- 1. FOOTWEAR** Wear running shoes which are ½ -1 size bigger than your normal shoe size and break them in before big run or blisters may attack!
- 2. HYDRATION** Make sure you drink plenty of fluids, but lay off the alcohol and caffeine! And on race day, don't overdo the fluids pre-race to avoid toilet stops!
- 3. STRETCH** Warming up and warming down are essential. At least 10 minutes of stretching before and after any form of training.
- 4. DIET** Carbs, carbs, oh and more carbs! The body needs fuel and lots of it! My diet is pretty much 60-70% carbs.
- 5. ENJOY!!!** The London Marathon was the best day ever. It is daunting but amazing so don't get stressed about it or you'll get tense.

Images: (Top) Emily Tull; (Bottom) Fragile 3, hand-stitched portrait by Emily



PRODUCED BY
animate
arts company ltd